



CATERING & PARTY TRAYS

Let the Queen City Creamery & Deli cater your next family function or office party!

The Queen City Creamery & Deli offers a wide variety of party trays that are perfect for large gatherings. From office luncheons and meetings to family holiday parties and functions, the Creamery party trays make an ideal addition to your event. Easy to eat and deliciously casual, our wrap, bagel, fruit and vegetable trays will make catering your event easier than ever. Delivery is available.

Contact us today at (301) 777-0011 for details or to place your order!



Welcome back to the Queen City Creamery!

You will find some old favorites and some new additions that will quickly become favorites! We will strive to ensure that every visit to the Creamery is a pleasurable one! Our hope is that our customer service, exceptional products, and distinct environment will have each of you returning again and again!

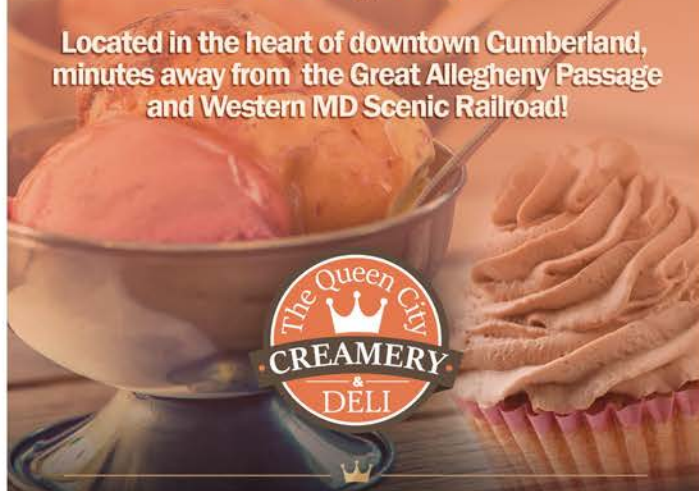


Come See Us!

Scan the QR code with your tablet or smartphone for door-to-door GPS!



Located in the heart of downtown Cumberland, minutes away from the Great Allegheny Passage and Western MD Scenic Railroad!



108 W. Harrison St., Cumberland, MD

Phone: 301-777-0011

queencitycreamery.com

108 W. Harrison St., Cumberland, MD

Daily Specials & Flavors Open Every Day



HOME-MADE
Frozen Custard & Sorbet

- Sandwiches, Soups, and Salads
- Breakfast & Bakery Items
- Lattes & Specialty Coffee Drinks
- Adult Shakes & Alcoholic Beverages

Visit us online at
queencitycreamery.com



BREAKFAST

Made-to-Order Breakfast Sandwich [\$5.75]
Scrambled egg with choice of ham, sausage, or bacon and cheese, on choice of bread
On a croissant [\$6.00]

Croissant or Muffin [\$2.25]

French Toast or Pancakes (3) [\$5.50]
With scoop of frozen custard [\$6.99]

Plain Bagel [\$2.00]

Bagel with Cream Cheese [\$3.00]

Oatmeal with Brown Sugar [\$2.95]
Add blueberry or almonds [\$1.00]

2 Eggs Cooked to Order [\$2.25]

Bacon or Sausage [\$2.00]
3 pieces of bacon or 2 sausage patties

Shredded Hash Browns [\$2.25]

SOUPS & MORE

6oz Cup [\$3.50] 10oz Bowl [\$5.50]
Soup prices may vary depending upon ingredients

Side Items [\$1.50 each]
Pasta Salad, Applesauce, Coleslaw

BEVERAGES

Fountain Drink, Iced Tea

Regular Drink [\$1.75]

Large Drink [\$2.00]

Freshly Squeezed Lemonade [\$2.75]

Old Dominion Draft Root Beer [\$2.75]

KIDS MEAL

Served with applesauce and a fountain drink

Choice of: Grilled Cheese, Peanut Butter & Jelly, Peanut Butter & Honey or Boar's Head All Beef Hot Dog! [\$3.99]

BURGERS

Served with chips. Add a regular fountain drink for \$1.

Burger of the Week [\$8.99]
Fresh ground beef patty with choice of toppings.

Black Bean Veggie Burger [\$8.99]
With choice of toppings.

SANDWICHES & WRAPS

Served with chips. Add a regular fountain drink for \$1.

Deli Sandwich [\$8.99]
Choice of Ham, Turkey, Roast Beef, Corned Beef, Pastrami (hot or cold), Roasted Chicken, or Buffalo Chicken

Corned Beef of Turkey Reuben [\$8.99]

BLT [\$7.99]

Club Sandwich [\$8.99]
Ham, Turkey, Bacon, and Swiss Cheese

Egg or Tuna Salad Sandwich [\$6.99]

Chicken Salad Sandwich [\$7.99]

Corned Beef Brisket Sandwich [\$8.99]

Boar's Head All-Beef Hot Dog [\$3.19]
Add sauerkraut or chili sauce [\$1.00]

12" Wraps [\$8.99]
Choice of Ham, Turkey, Roast Beef, Roasted Chicken, or Buffalo Chicken

12" Veggie Wrap [\$6.99]

Tree Hugger [\$8.99]
Grilled portobello, Swiss cheese and veggies

Pesto Mozzarella [\$8.99]
Grilled bread of choice, with pesto, mozzarella, and tomatoes

Daily Combo [\$7.99]
½ Sandwich (Manager's Choice OR Egg, Tuna, or Chicken Salad) w/ bowl of soup or a garden salad

Panini or Sandwich of the Week [\$8.99]

Choices of Cheeses: American, Swiss, Provolone, Cheddar, Pepper Jack, Muenster

Choices of Breads: Berry Wheat, Whole Grain Oat, Hearty White, Marble Rye, Pita

SALADS

Garden Salad [\$3.49]

Grilled Chicken Salad [\$8.99]
Marinated chicken breast atop mixed greens and veggies

Strawberry Spinach Salad [\$6.00]
Baby spinach, sliced strawberries, and toasted almonds, tossed in our homemade house dressing
Add grilled chicken [\$3.95]

FROZEN CUSTARD

Cones [1x \$3.00] [2x \$4.25] [3x \$5.50]
Single/Double/Triple Scoop

Waffle Cone or Bowl [add \$1.00]

Dipped Waffle Cone [add \$1.25]

Toppings: Reese's Peanut Butter Cup, Heath Bar, Butterfinger, Oreo, Cookie Dough, M&M, Snickers, Nestlé Crunch, Strawberry Topping, Caramel, Chocolate Fudge, Peanut Butter, Marshmallow, Sprinkles, Whipped Cream, Cherries

Chunkies [\$4.99]
Custard blended with your choice of toppings.

Milk Shakes [Small \$3.25] [Large \$4.99]
Vanilla, Chocolate, Strawberry, Butterscotch, Caramel

Malts [Small \$3.49] [Large \$5.69]

Ice Cream Floats [\$4.99]
Vanilla, Chocolate, Root Beer

Ice Cream Cakes (Made to Order)
[8" Cake \$24.00] [10" Cake \$27.00]

Sundaes [Small \$3.75] [Large \$4.99]
Chocolate, Butterscotch, Hot Fudge, Caramel, Strawberry, Peach, Peanut Butter, Raspberry, Blueberry, Cherry, Pineapple, Marshmallow

Sundae of the Week
[Small \$3.50] [Large \$4.75]

Banana Split [\$6.49]

Fruit Smoothies [\$3.99]

Frozen Custard [Pt. \$5.99] [Qt. \$9.99]

BAKERY ITEMS

Daily bakery items may vary upon availability.

Cupcakes [\$2.00]
Chocolate, Vanilla, or flavor of the day

Specialty Cupcakes [\$3.00]

Iced Cookies [\$1.25]

Cinnamon Rolls [\$2.50]

Cake Pops [\$2.00]

Muffins [\$2.25]

HOT COFFEE & ESPRESSO

Coffee of the Day [\$1.95 / \$2.25 / \$2.50]
Café au Lait [\$2.55 / \$2.85 / \$3.10]
Latte or Cappuccino [\$3.25 / \$3.75 / \$4.25]
Americano [\$2.75 / \$3.00 / \$3.50]
Espresso [1x \$1.95 / 2x \$2.75 / 3x \$3.50]
Vanilla Latte or Mocha [\$3.75 / \$4.25 / \$4.75]
Caramel Macchiato [\$4.05 / \$4.60 / \$4.95]
White Chocolate Mocha [\$4.05 / \$4.55 / \$4.95]

ICED DRINKS

Cold Brew Iced Coffee [\$2.50 / \$3.00]
The Black Tie [\$3.00 / \$3.50]
Iced Latte [\$3.75 / \$4.25]
Iced Caramel Macchiato [\$4.60 / \$4.95]
Iced Mocha [\$4.25 / \$4.75]

JAVIVA BLENDED DRINKS

Frozen blended coffee drink
Espresso [\$4.00 / \$4.50]
Espresso + Mocha, Vanilla, Caramel [\$4.50 / \$5.00]
Espresso + Chocolate & Caramel Swirl [\$4.50 / \$5.00]
Chai or Matcha Green Tea [\$4.50 / \$5.00]
Coffee-Free Chocolate, Vanilla, Caramel [\$4.00 / \$4.50]

MIGHTY LEAF TEA

Hot Tea (Black, Green, Herbal) [\$2.15]
Chai or Matcha Green Tea Latte [\$3.50 / \$4.15 / \$4.50]
Iced Tea (Black, Green, Herbal) [\$2.50 / \$2.85]
Iced Tea Infusions [\$3.25 / \$3.60]

COFFEE-FREE

Hot Cocoa [\$3.00 / \$3.30 / \$3.60]

CUSTOMIZE YOUR PEET'S

Soy or Almond Milk [add 60¢]
Additional Espresso Shot [add 80¢ each]
Additional Flavor Syrup [add 50¢ each]
Vanilla, Sugar-Free Vanilla, Hazelnut, Sugar-Free Hazelnut, Blueberry, Mango, Almond, Mojito, Peppermint, Pumpkin Pie, French Raspberry, Macadamia Nut, Spicy Chocolate, White Chocolate, Caramel, Mocha

** All menu items and availability are subject to change without notice.*

